

Interprofessional by Design™: Meeting at the Crossroads to Build an Innovative Interprofessional and Substance Use Disorder Training Practice Environment

Dr. Liz Harrell DNP, PMHNP-BC, Doctorate of Nursing Program, Arizona State University, College of Nursing and Health Innovation, SHOW Program Director

Dr. Oaklee Rogers OTD, OTR/L, Department of Occupational Therapy, Northern Arizona University, Health Sciences, SHOW Administrative Director



Disclosures



- Dr. Liz Harrell DNP, PMHNP-BC, Doctorate of Nursing Program, Arizona State University, College of Nursing and Health Innovation, SHOW Program Director is the *volunteer* Medical Director for Crossroads as well as a Board member.

Acknowledgements



- National Center for Interprofessional Practice and Education
- Center for Advancing Interprofessional Practice, Education and Research (CAIPER)
- Crossroads Inc.
- Co-PI: Karen J. Saewert, PhD, RN, CPHQ, ANEF, Senior Director, Academic Innovation Evaluation Lead, ASU Center for Advancing Interprofessional Practice, Education, and Research (CAIPER) Arizona State University, College of Nursing and Health Innovation.

Objectives



- Identify how to initiate, develop and implement multiple and diverse partners when starting a new collaborative interprofessional initiative.
- Describe the role innovative collaborative partners can have in maximizing the access to and quality of care for those experiencing substance abuse disorders while creating relevant student practicum sites .
- Describe challenges faced when starting and implementing an innovative model of care including lessons learned for successful implementation.

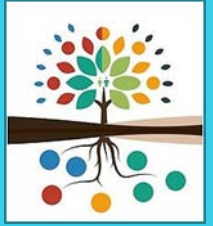
Student Health Outreach for Wellness (SHOW)



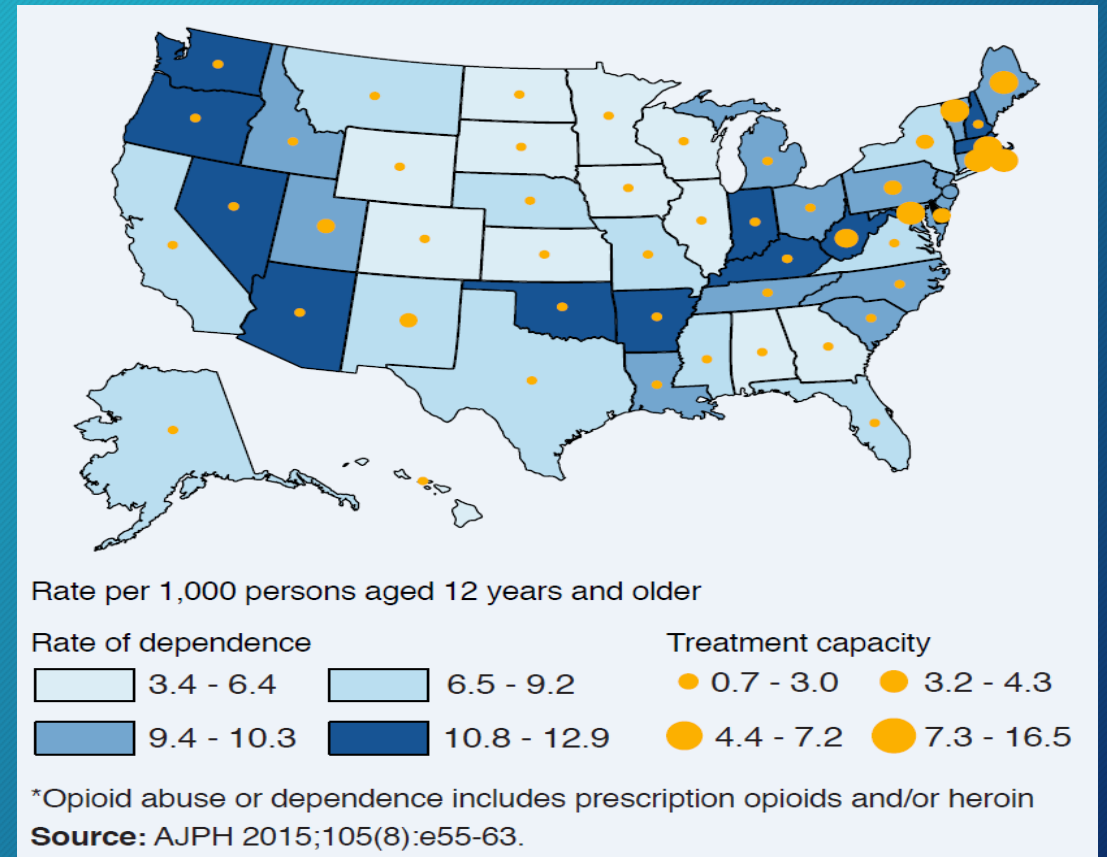
- Arizona's first tri-university collaborative project
- Interprofessional team-based care model
- Run by students and guided by faculty
- Diverse backgrounds: traditional healthcare disciplines, business, journalism, law, global health, and computer science
- Mission: To provide holistic, client-centered health care services



Background



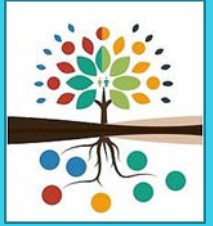
- Arizona has one of the highest opioid dependency rates in the United States
- Need for increased health professions training in the treatment of substance use disorders has been widely recognized;
 - including experiential learning opportunities along with addiction specialist role modeling.



Partnerships



THE
crossroads
CHANGING LIVES. ONE PERSON AT A TIME.



- Largest residential and outpatient substance abuse treatment program in the Southwestern United States
- Provided treatment to 1,406 individuals in 2015
- Partnership Win - Win
 - SHOW is able to provide a unique opportunity to train health professional students to work with those experiencing substance use disorder
 - The Crossroads staff and residents/patients receive additional support that they would not receive otherwise

Building Collaborations



Needs Assessment

Identification of Boundary Spanners and Champions

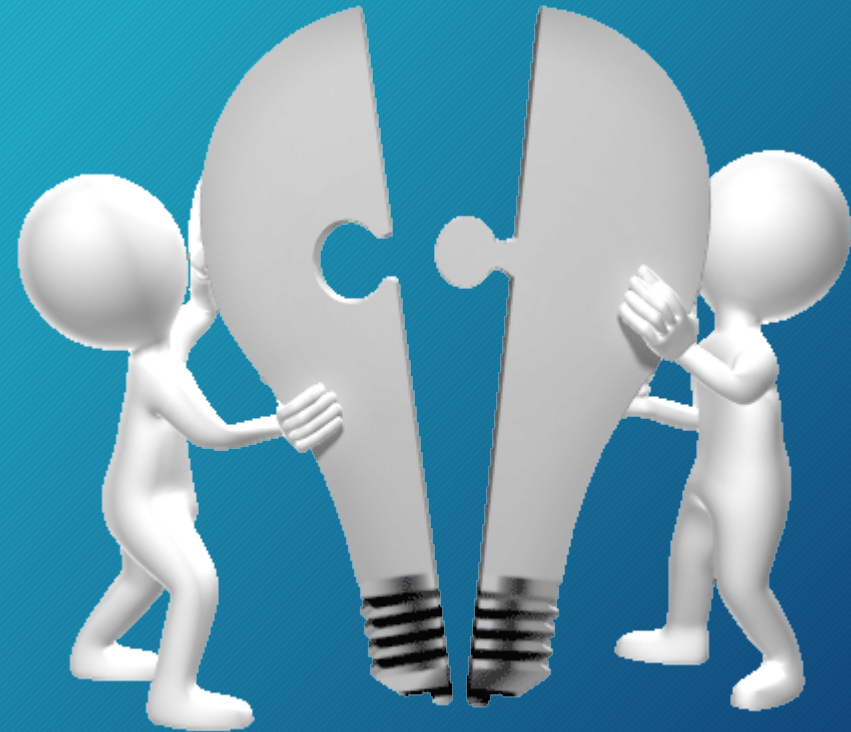
Roadmap for success



Methods



Two interprofessional teams were created to address the complex combination of genetic factors that influence the progression of substance use to dependence and the environmental factors unique to the individual that influence recovery.



Methods



Objectives	Activity	Timeline
<p>1. The Crossroads, Inc./SHOW community-based practice collaboration</p>	<ul style="list-style-type: none"> • Convene Practice Partnership Group • Establish Infrastructure • Yr. 1 Start-Up, Pilot, Refine • Yr. 2 Scale up, Scale up and Sustain • Community Needs Assessment 	<p>October 1, 2016 - September 2018</p> <p>Yr. 1</p> <ul style="list-style-type: none"> ➤ October 2016-February 2017 ➤ March 2017-May 2017 ➤ June 2017- August 2017 <p>Yr. 2</p> <ul style="list-style-type: none"> ➤ September 2017- December 2018 ➤ January 2018- May 2018 ➤ June 2018- September 2018
<p>2. Participating program health professions students will increase IPEC® and substance use disorder care competencies.</p>	<ul style="list-style-type: none"> • Participation in weekly inter-disciplinary huddles to plan and deliver interdisciplinary care 	<p>February 1st, 2016- September 2018</p> <p>Pre/post surveys to determine competencies will be completed each semester.</p>
<p>3. Number of health professions students involved will represent at least 20% of the eligible students in the participating professional programs.</p>	<ul style="list-style-type: none"> • Recruit and Orient 	<p>January 2017- August 2018</p>

Outcomes & Measurement



Objectives	Measure(s)
<p>The Crossroads, Inc./SHOW community-based practice collaboration will be launched.</p>	<p>Project Gantt Chart Schedule Quality Measures Tracking</p>
<p>Participating program health professions students will increase IPEC® and substance use disorder competencies.</p>	<p>Interprofessional Collaboration Readiness Questionnaire (IP-CRQ©) Lamb & Saewert (2013)</p> <p>University of the West of England Interprofessional Questionnaire (UWE-IQ©) Pollard, Miers, & Gilchrist (2004, 2005)</p> <p>The Physicians' Competence in Substance Abuse Test (P-CSAT) Harris & Sun (2012)</p>
<p>Number of health professions students involved will represent at least 20% of the eligible students in the participating professional programs.</p>	<p>Eligible Student Participation Tracking Applied Project, thesis and various other student activities</p>

Care Management Intervention Outcomes



Quality Measures Tracking

Care management teams provided free integrated services to over 100 residents for a total of twelve shifts in Spring 2017

Medical, altercation and other incident reports including transfers to higher levels of care were completely eliminated

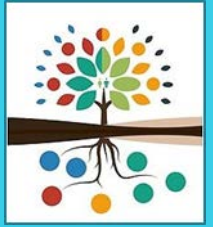
An increased 30-day completion rates trended

Residents reported improved satisfaction, as evidenced by a 7-20% increase in patients rating their experience "Excellent" combined with a 5-14% decrease in patients rating their experience "Fair" or "Good" in piloted facilities

Five faculty and 35 students from 6 different disciplines were involved in the care management and health promotion education

Referral Category	#
STD Testing	37
Medical	34
Dental	27
Smoking Cessation	23
Psychiatric	22
Physical Therapy	17
Social Work	18
Eye Exams	16
Medication Refills	11

Health Promotion Process



Fall 2016 - Spring 2017

Needs
Assessment

Program
Development

Program
Implementation

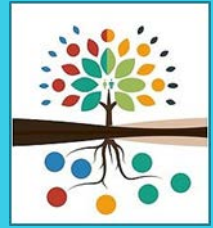
Program
Evaluation

Health Promotion Intervention Outcomes



Pilot Site	Students Involved	Intervention	Frequency
Flower	OT	Life Skills	4 sessions
	PT	Wellness Education	5 sessions
	SW	Recovery Quilt	Ongoing
		Family Education	4 sessions
East	OT	Vocational Training	2 sessions
	PT	Wellness	5 sessions
	SW	Family Education	4 sessions

Practice Partnership Outcomes



What is going well?
Referral Notebook/Instructions
Services ↑ Length of Stay
Huddles - collaboration betw
Crossroads + MEDICAL professionals
↓ Violence * ↑ management of
* * Depression/Anxiety
↑ Confidence in ability to
care for population (Crossroads)
↓ EMS ↑ Resources

The SHOW Crossroads partnership has evolved to expand interprofessional care services provided to the residents of Crossroads by:

- (1) addressing gaps in healthcare often experienced by marginalized populations
- (2) implementing health promotion activities specifically designed for populations experiencing substance use disorders.
- (3) alleviated physical and behavioral health needs that may detract from sobriety attainment
- (4) provided Crossroads with an opportunity to broaden and expand services.

Lessons Learned



What can be improved? How?

Flu after health management
team - ^{FOR both assessment teams}
+ Crossroads staff

Formalized Training

IPP Space

Organization of Data

Coverage of services

Sustainability

All student projects must go
through faculty first!

**BIGGEST
Challenge**

Is

**Keeping up
with the
Demand!**