



Abstract #483:

Developing a community-based interprofessional practice and education collaborative with multiple institutional partners



YVIPEC

A Multi-Institutional Community-Based IPE Collaboration

Yakima Valley Interprofessional Practice & Education Collaborative

Linda Dale, Laurene Enns, Victoria Keetay, Angela Stewart

Disclosures

The presenters have no financial disclosures

Linda Dale and Angela Stewart are both members of the YVIPEC Steering Committee

Linda Dale is the Primary Investigator on the HRSA Primary Care Training and Enhancement Grant

Objectives

- ▶ Identify and discuss realized or anticipated successes with a multi-institutional IPE collaboration
- ▶ Identify and discuss realized or anticipated challenges or barriers to developing a multi-institutional IPE collaboration
- ▶ Identify at least two critical questions for further exploration relative to multi-institutional IPE collaborative efforts

Outline

- ▶ YVIPC Overview
- ▶ How can multi-institutional collaboration help to overcome barriers to development of an effective IPE program?
- ▶ What is a critical next step that must be taken to move multi-institutional IPE collaboration forward?
- ▶ Wrap Up



Osteopathic
Medicine



Dietetics &
Paramedicine



YVVIPEC

Partners and Programs

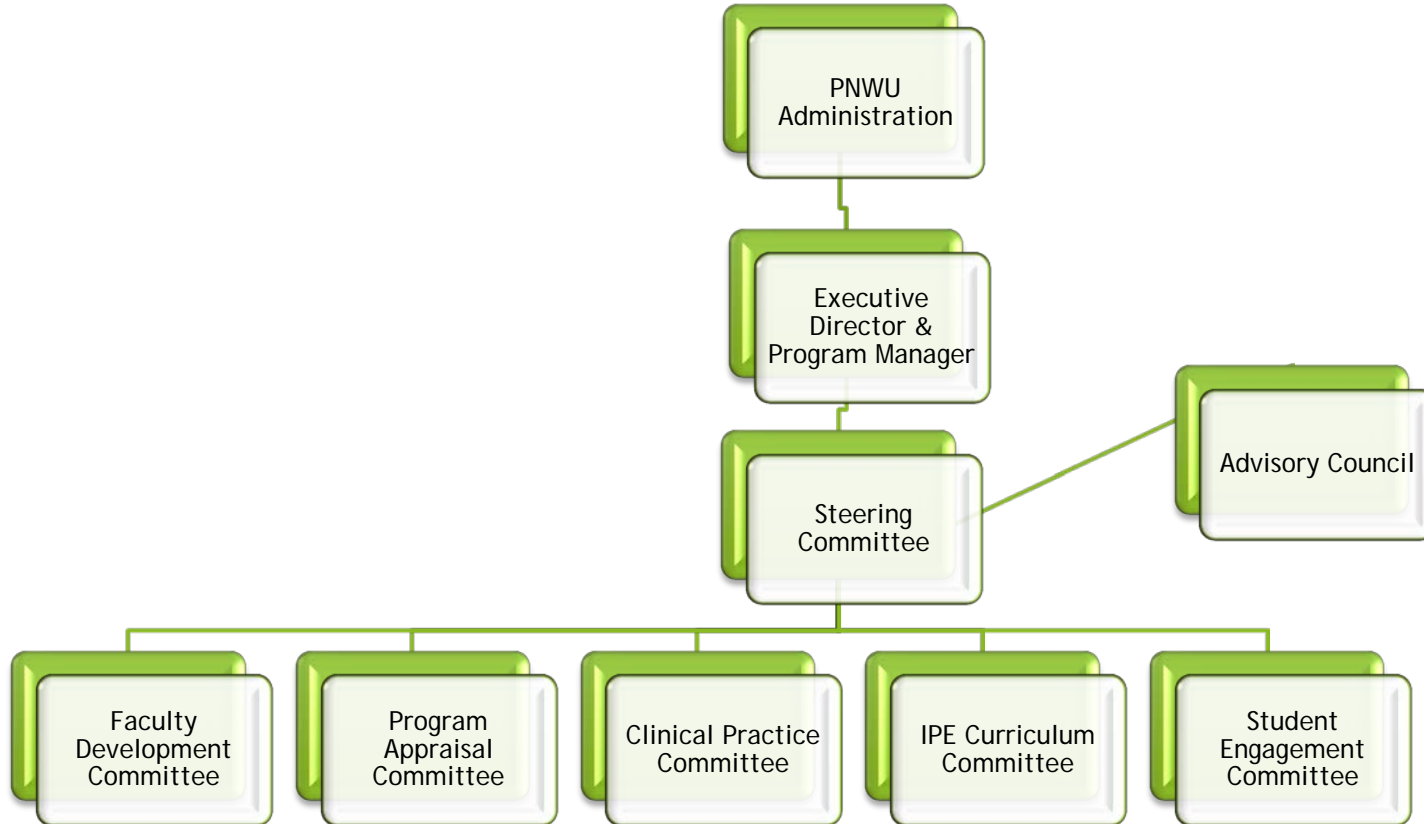


Nursing &
Pharmacy



Physician Assistant &
Nursing

YVIPEC Organizational Structure



SWOC Analysis

▶ Strengths

- ▶ Breadth of professions participating
- ▶ The model increases diversity of perspectives and resources available
- ▶ Accomplishments to date gives confidence for future initiatives

▶ Weaknesses

- ▶ Multi-university bureaucracy
- ▶ Lack of clarity in goals and objectives

SWOC Analysis

▶ Opportunities

- ▶ Regional expansion
- ▶ Support (e.g., donors, administrative) if value clearly communicated

▶ Challenges

- ▶ Long-term funding from partners/sustainability
- ▶ Coordination of schedules and curriculums
- ▶ IPE may be considered a less important skill (i.e., a 'soft' skill)

How can multi-institutional collaboration help to overcome barriers to development of an effective IPE program?

1-2-4-All Activity & Report Out

<http://www.liberatingstructures.com/>

What is a critical next step that must be taken to move multi-institutional IPE collaboration forward?

**10/25 Crowd Sourcing
Activity & Report Out**

<http://www.liberatingstructures.com/>

Wrap-Up

- ▶ Recap
- ▶ References
- ▶ Resources
- ▶ Q & A